

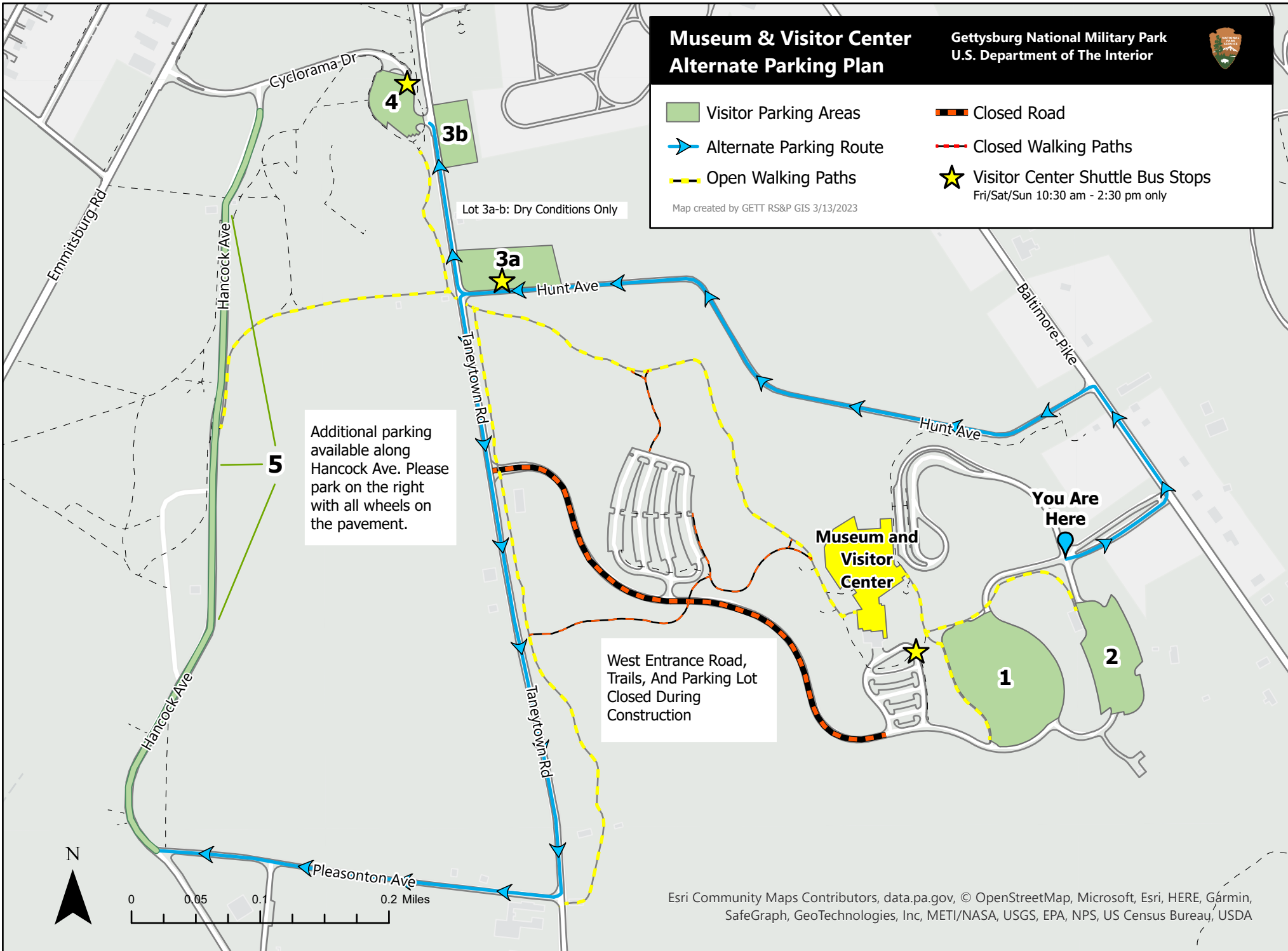
Museum & Visitor Center Alternate Parking Plan

Gettysburg National Military Park
U.S. Department of The Interior



- Visitor Parking Areas
- Alternate Parking Route
- Open Walking Paths
- Closed Road
- Closed Walking Paths
- Visitor Center Shuttle Bus Stops
Fri/Sat/Sun 10:30 am - 2:30 pm only

Map created by GETT RS&P GIS 3/13/2023



Lot 3a-b: Dry Conditions Only

Additional parking available along Hancock Ave. Please park on the right with all wheels on the pavement.

West Entrance Road, Trails, And Parking Lot Closed During Construction

Museum and Visitor Center

You Are Here



0 0.05 0.1 0.2 Miles